

Grand Haven Community Development District

Pond Prioritization for Stormwater Outfall Repairs

Applied Technology & Management, Inc.

February 3, 2011

Brian Simms



*Water Resources,
Environmental, Marine, and
Coastal Engineering*



Outline



List of Ponds by Priority

- Number & Type of Repairs for each
- Approximate Repair Costs

Pond Locations/Access/Phasing



Questions

List of Ponds by Priority



Pond Priority	Pond ID	# of Priority				~ Repair Cost Excluding Landscape
		<u>1</u>	<u>2</u>	<u>3</u>	<u>4</u>	
1	18	2	3	4		\$ 38,750
2	19	1	2			\$ 10,550
3	14	2		3		\$ 21,320
4	28		2	7		\$ 39,030
5	25	1	1	2		\$ 15,970
6	23	2				\$ 10,840
7	13		3			\$ 14,700
8	24		2	3		\$ 10,250
9	27		2	1		\$ 15,220
10	20	1				\$ 4,900
11	7		1			\$ 2,565
12	21		1			\$ 2,565
13	22		1			\$ 4,900
14	W3		1		2	\$ 2,565

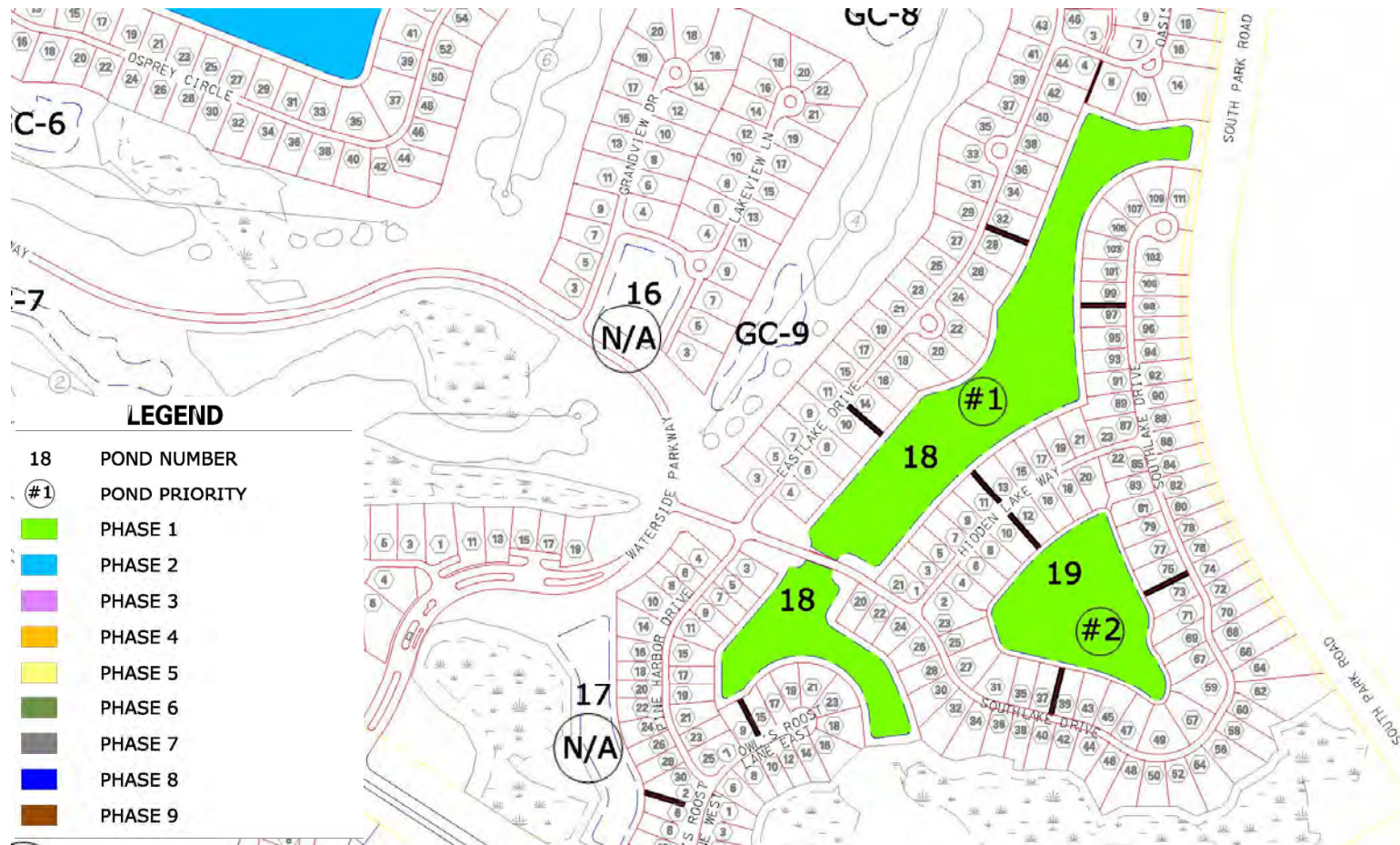
Total = \$ 194,125

All priority 1 & 2's addressed

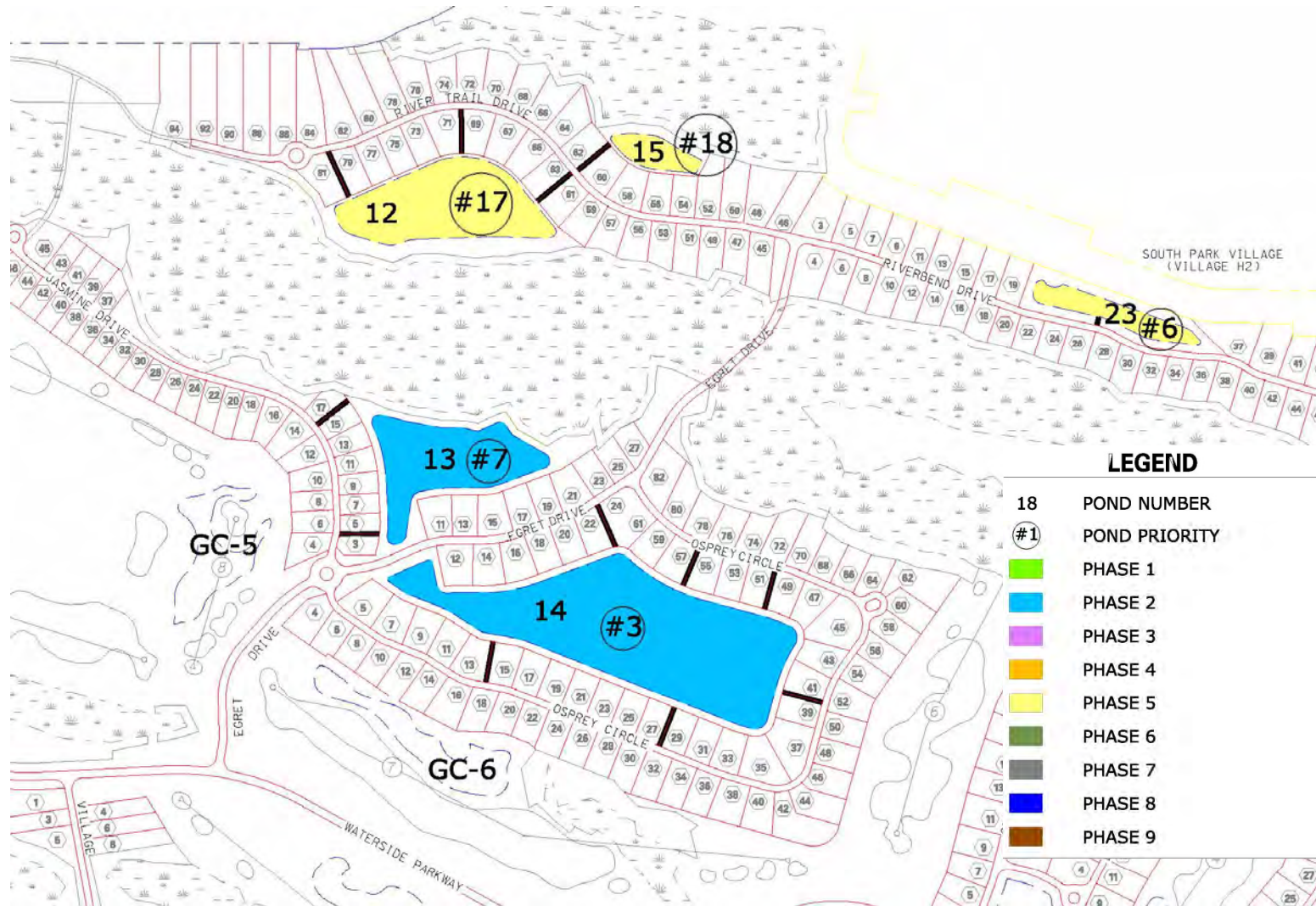
Pond Priority	Pond ID	# of Priority				~ Repair Cost Excluding Landscape
		<u>1</u>	<u>2</u>	<u>3</u>	<u>4</u>	
15	26			3	2	\$ 9,630
16	W2			2	5	\$ 5,130
17	12			2	1	\$ 5,130
18	15			1		\$ 4,900
19	W1			1	2	\$ 2,565
20	10			1		\$ 4,500
21	9			1	1	\$ 4,500
22	31			1	1	\$ 2,565
23	29			1	1	\$ 4,500
24	6			1	2	\$ 450
25	8			1		\$ 450

Total = \$ 44,320

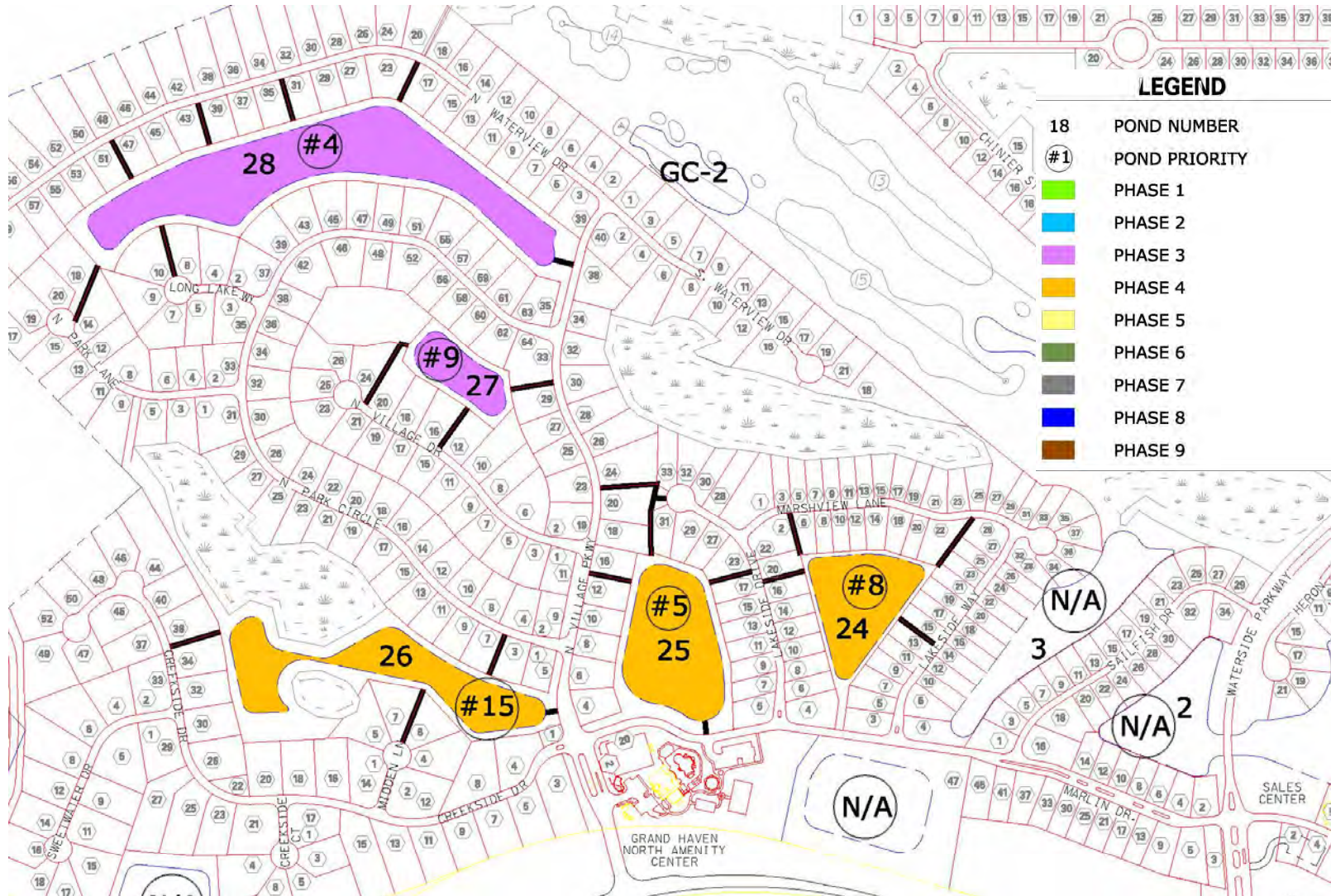
Pond Locations/Access/Phasing



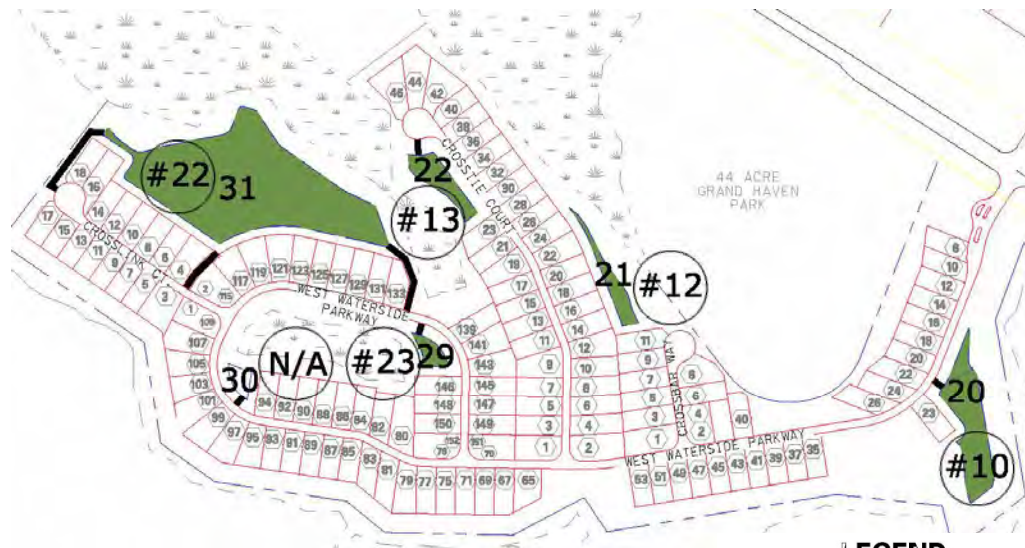
Pond Locations/Access/Phasing



Pond Locations/Access/Phasing

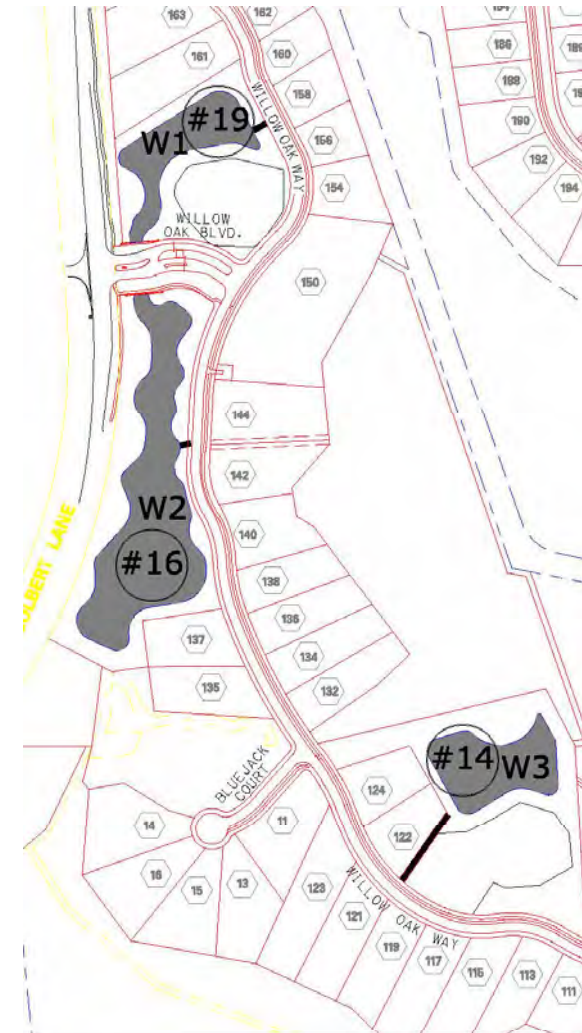


Pond Locations/Access/Phasing

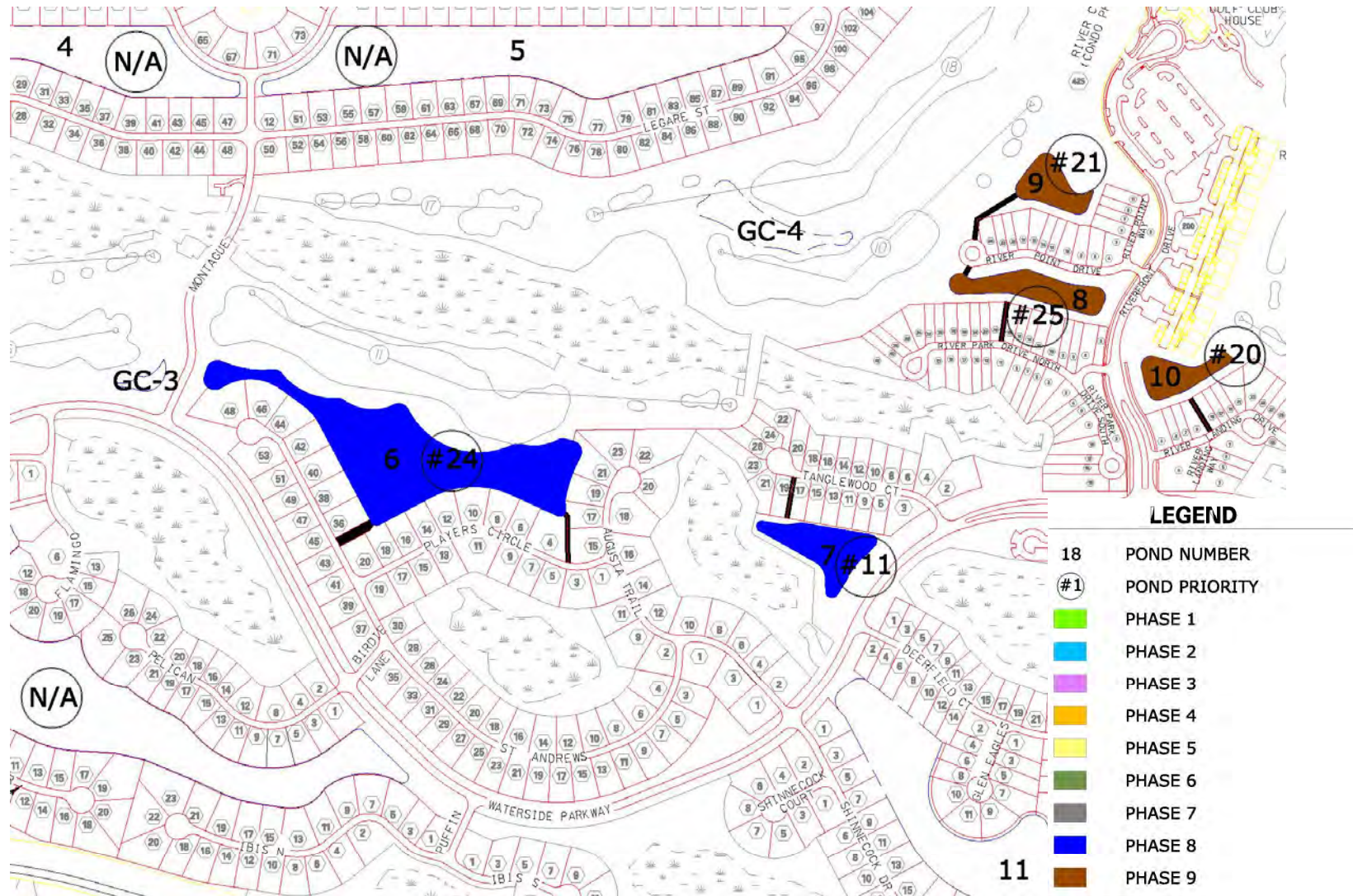


LEGEND

- 18 POND NUMBER
- #1 POND PRIORITY
- PHASE 1
- PHASE 2
- PHASE 3
- PHASE 4
- PHASE 5
- PHASE 6
- PHASE 7
- PHASE 8
- PHASE 9



Pond Locations/Access/Phasing



Questions?